



866.654.2226



Cut Costs. Work Smarter. Drive Safer.
**FLEET MANAGEMENT
SOLUTIONS FROM TRACKNET**



Improve your fleet's productivity and performance with Networkfleet. Our innovative GPS vehicle tracking technology lets you control costs and improve operational efficiencies, vehicle reliability, driver safety, and more. Designed to get the most out of your people and your vehicles, our patented telematics solution helps you leverage resources to address shrinking budgets, rising fuel and labor costs, and other vehicle management challenges. Whether your fleet is public or private, three or 30,000 vehicles, Networkfleet drives more efficient ways of working to keep you moving forward.

TrackNet's Networkfleet System helps you do more with less. That's Powerful.

SPEED

34 MPH

BE NEARLY EVERYWHERE AT ONCE.

Networkfleet provides the reliable, timely data you need to make smart fleet management decisions. Engine diagnostic alert features identify issues before they become problems, helping to prevent vehicle breakdowns, control maintenance costs, and improve customer service. Robust reporting capabilities let you track vehicle performance over time, identify trends, and take action to enhance the long-term productivity of your fleet.

From vehicle location to fuel usage, idle time, driver safety and more, Networkfleet keeps you on top of everything that happens with your fleet – every vehicle, all the time.

FLEET MANAGEMENT TRANSFORMED.

Manage your entire fleet more efficiently and effectively with Networkfleet. Drivers become more accountable. Managers make decisions based on hard data rather than guesswork. Customer service improves as you route vehicles more efficiently. Forecasting and budgeting become more predictable. You even reduce environmental impacts through lower fuel usage and fewer emissions.

IMPROVE PROFITABILITY.

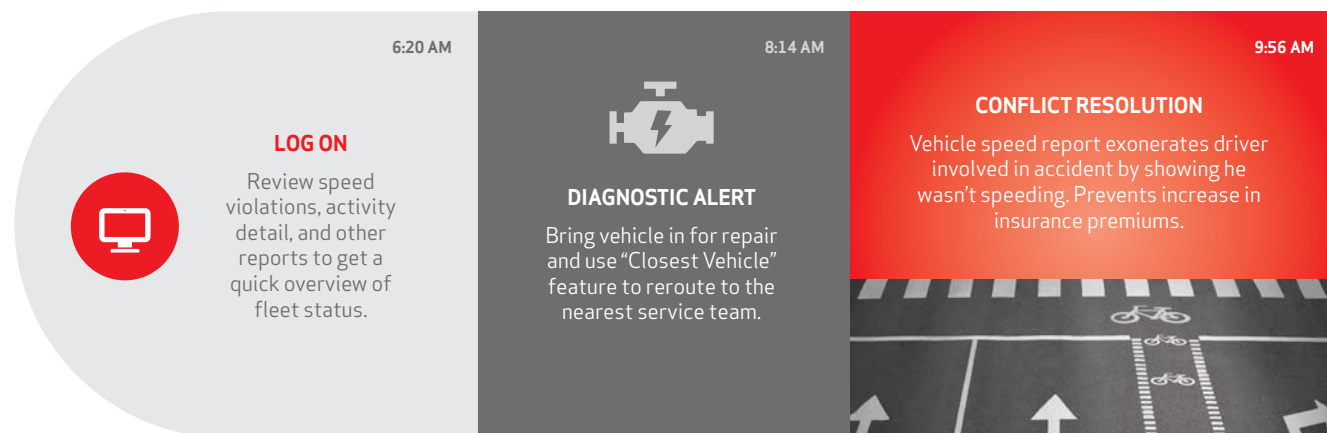
From more efficient routing to less vehicle idle time, Networkfleet helps you control costs and enhance profitability. Public fleets can meet tight budgets and reduce fleet size through ongoing improvements in fuel usage, service costs, and vehicle utilization. Commercial fleets improve profitability by using more efficient routing to take on more jobs without adding vehicles or personnel. Monitoring driver speed can reduce the risk of accidents and moving violations, which can lead to lower insurance premiums. GPS

tracking helps to reduce unauthorized use and recovery of stolen vehicles. With so many potential ways to save, Networkfleet can pay for itself in no time.

TECHNOLOGY YOU CAN TRUST.

Designed with more than 50 Networkfleet patents that set the standard for the telematics industry, our fleet management products are reliable and easy to use. Optional system-wide satellite redundancy keeps you in touch with vehicles, even in remote areas where driver safety is more critical. Plus, our limited lifetime warranty for the 5000 Series protects your investment throughout the life of the product.

With Networkfleet, smart fleet management isn't an unrealized goal; it's how you do business every day – and that's a powerful advantage.





12:20 PM



FRAUD PREVENTION

Driver fills up truck with authorized WEX fuel card, helping prevent fuel fraud and providing more control over fleet operational expenses.

1:00 PM



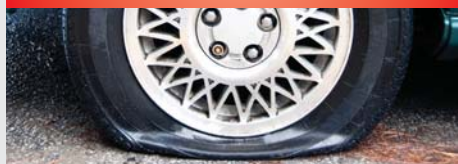
MANAGEMENT TEAM MEETING

Review speed, geofence, and unauthorized vehicle usage reports to reward good drivers and coach repeat violators.

2:15 PM

INCLUDES ROADSIDE ASSISTANCE

Use the industry's only no-cost Emergency Roadside Assistance to repair a flat tire and still get there on time.



LOW COST / HIGH ROI

Networkfleet delivers the data you need to lower costs and improve fleet performance starting at \$1 per day, per vehicle.

11:17 AM

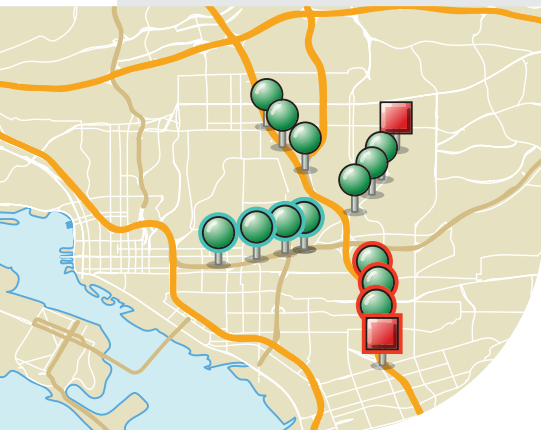
ENVIRONMENTAL REPORTS

Review report to track progress against government-mandated emissions reduction requirements.

10:03 AM

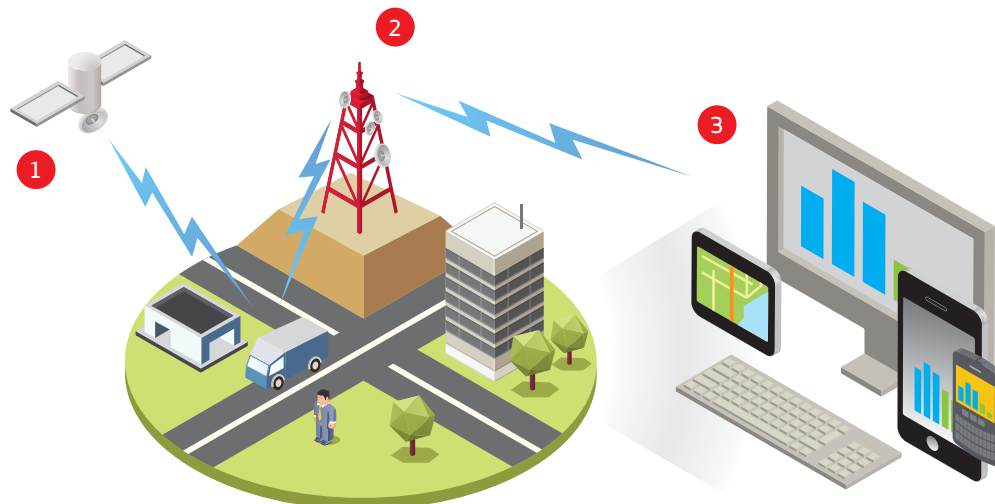
STOLEN VEHICLE

Relay vehicle tracking data to police, who recover vehicle within an hour.



Information rules the road.

- 1** Installed Networkfleet units monitor vehicle location, engine diagnostics, and other fleet performance metrics 24/7.
- 2** The system automatically transmits vehicle and asset data over a secure wireless network to the Networkfleet data center.
- 3** Access the secure Networkfleet website to set and receive vehicle alerts, track vehicles, and monitor driver behavior. Using PCs, smart phones, or tablets, managers monitor data to make real-time fleet management decisions.



4:25 PM



EXCESSIVE IDLE ALERT

Contact driver to assess situation in the field.



ASSET TRACKING

Gain confidence and improve response times by using Asset Guard to pinpoint exact locations of all fixed and movable assets.

5:35 PM

LOG OFF

Review status of alerts received during the day. Check final location of all vehicles. Check upcoming scheduled weekly maintenance.



Turn data into decisions.

Smart fleet management involves more than just tracking your vehicles. It's what you do with the data that counts.



CUSTOMER SERVICE THAT GOES THE EXTRA MILE.

Certified Networkfleet installers provide fast, accurate installation of your system. On-demand training courses and a dedicated customer care team help keep your system operating smoothly and efficiently.



POWERFUL DATA MANAGEMENT TOOLS.

Online data management and reporting tools help you organize, manage, and share your vehicle data for informed fleet management decisions.



EXPAND YOUR CAPABILITIES WITH THIRD-PARTY SOFTWARE INTEGRATION.

Easily integrate Networkfleet data into your own system. Agreements with Esri® ArGIS® GeoEvent Processor and AssetWorks enhance mapping and data management capabilities. Built-in Garmin integration facilitates turn-by-turn navigation and direct communication with drivers.



MAINTENANCE MADE EASY.

Automatic engine diagnostic alerts identify potential issues before they become big problems. Detailed vehicle usage reports help you schedule preventive maintenance to control repair, labor, and replacement costs.



SATISFY GOVERNMENT OR CORPORATE FLEET REQUIREMENTS.

Remote monitoring of fuel usage, miles driven, and vehicle emissions helps you address government regulations and corporate policies regarding fleet size, greenhouse emissions, vehicle utilization, and other fleet performance targets.



PROTECT YOUR VEHICLES AND YOUR DRIVERS.

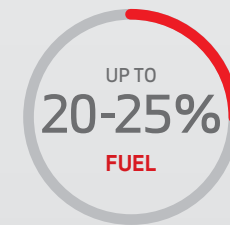
Enhance fleet security, reduce the risk of accidents, and decrease excessive wear and tear on vehicles by monitoring speeding and other risky driving behaviors.

Benefits of a fleet management system.

According to Frost & Sullivan: Fleet operators that focus on achieving the benefits of a fleet management system can realize significant cost savings and operational improvements.*



INCREASED SAVINGS



ADDITIONAL BENEFITS

Improved Productivity	10-15%
Enhanced Vehicle Utilization	15-20%

*Custom Research from Frost & Sullivan LCV Telematics Market - November 2013.



TRACKNET IS PROUD TO BE PART OF THE VERIZON FAMILY.

TRACKNET offers VERIZON'S GPS fleet management solutions to help small to medium-sized businesses, enterprises, and government agencies better manage vehicles and assets. TRACKNET is a Platinum Partner of Verizon Telematics, a leader in next-generation connected services for the automobile, insurance, and healthcare industries, our solutions provide the accurate, timely data needed to make smart business decisions.

Since we began providing innovative telematics solutions in 1999, we've earned more than two dozen industry awards. An integral part of Verizon's Machine to Machine (M2M) initiative to make 30 billion connections by 2020, we strive to create a more connected world where you're always in touch with what you care about. Whether your fleet is public or private, small, medium, or large, TRACKNET keeps you moving forward.

866.654.2226 | tracknet@tracknetonline.com | tracknetonline.com